

I Can't Cross

The 7th Street
Railroad Crossing





The RR has contributed significantly to the economic growth of our city.

The Fort Worth and Denver Railroad reached Wichita Falls in 1882.



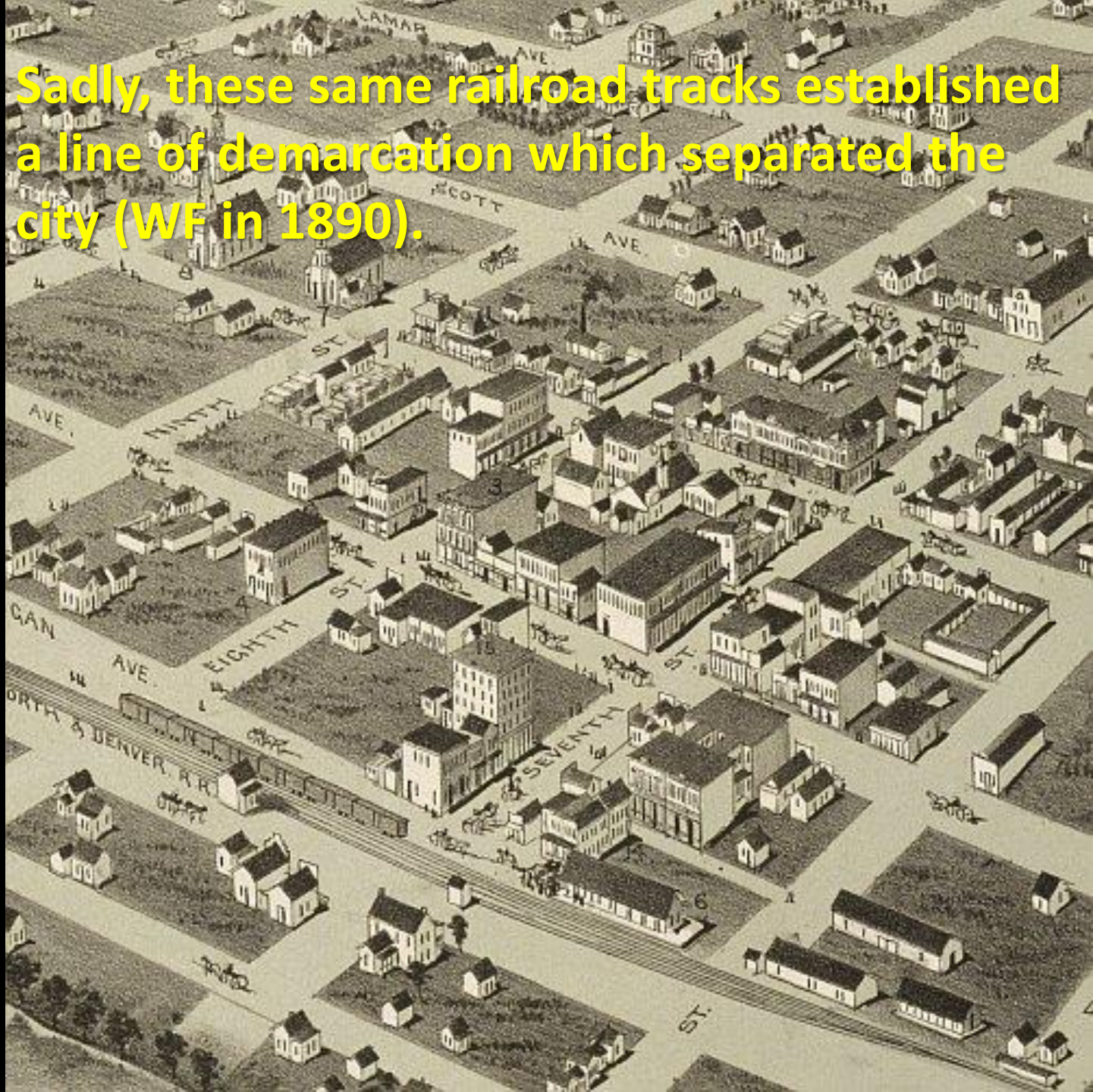
In the first quarter of the 20th century, the Missouri, Kansas, and Texas Railroad as well as the Fort Worth and Denver made Wichita Falls their headquarters.

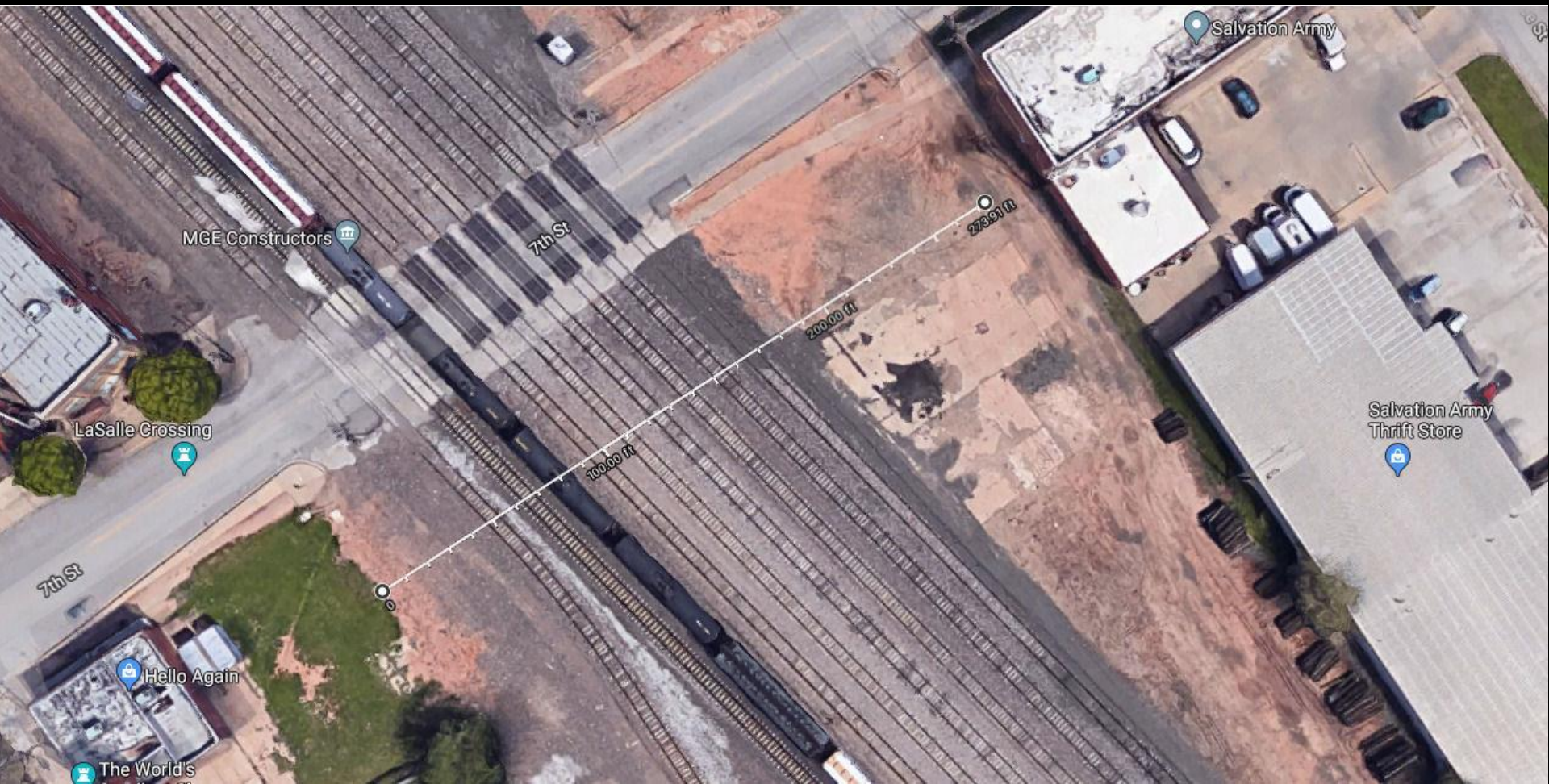




The oil boom helped the railroad system by financing its expansion to Burkburnett and opening it up to other railroad companies.

Sadly, these same railroad tracks established a line of demarcation which separated the city (WF in 1890).





Over time, this barrier has prevailed which unmarks to residents on either side of the tracks where their proper place is in the milieu of Wichita Falls.



This physical separation has gradually contributed to the decline of businesses that serve the Eastside community.



There is a marked absence of commercial establishments such as grocery stores, gasoline stations, banks, drug stores restaurants, etc.



It also limits access to service agencies, the public library, as well as other educational and cultural activities.



Seventh Street is the primary access which crosses the tracks and facilitates movement to and from downtown.

At this intersection vehicular and pedestrian traffic is impeded by the operations of the Burlington, Northern & Santa Fe Railroad Company.



The obstruction of traffic has existed for several decades and to this day presents a serious safety and access risk.

Play video →





Play video →



People who cross through the trains are called "Jumpers".

CROSSING
TRACKS



FILED	DATE
12	1987
13	1988
14	1989
15	1990
16	1991
17	1992
18	1993
19	1994
20	1995

2448

100% LAMINATED
657842

STEEL WHEELS CONTACT
WITH 30 AMP
FROM ELECTRICAL SYSTEM

2 INCH HF
COMP. SHOES

TILX
637199

PLATE
C

LD LMT 218700
LT WT 67300

2 INCH HF COMP. SHOES







2 INCH HF COMP SHOES

STOP















DECK
CLEARANCE
17 8000

7TH ST
M.P. 114.4

B-5114



DECK
CLEARANCE
97 MIN.

B-5114

THIS CAR
EXCEEDS WEIGHT

DECK
CLEARANCE
97 MIN.

B-5114

THIRD CLASS
EXCESS WEIGHT

M. 4





DECK
CLEARANCE
97 MIN.

13-5114

THIS CAR
EXCEEDS HEIGHT



DECK
CLEARANCE
47 MIN.

B-5114

FIRE CAR
EXCESS HEIGHT

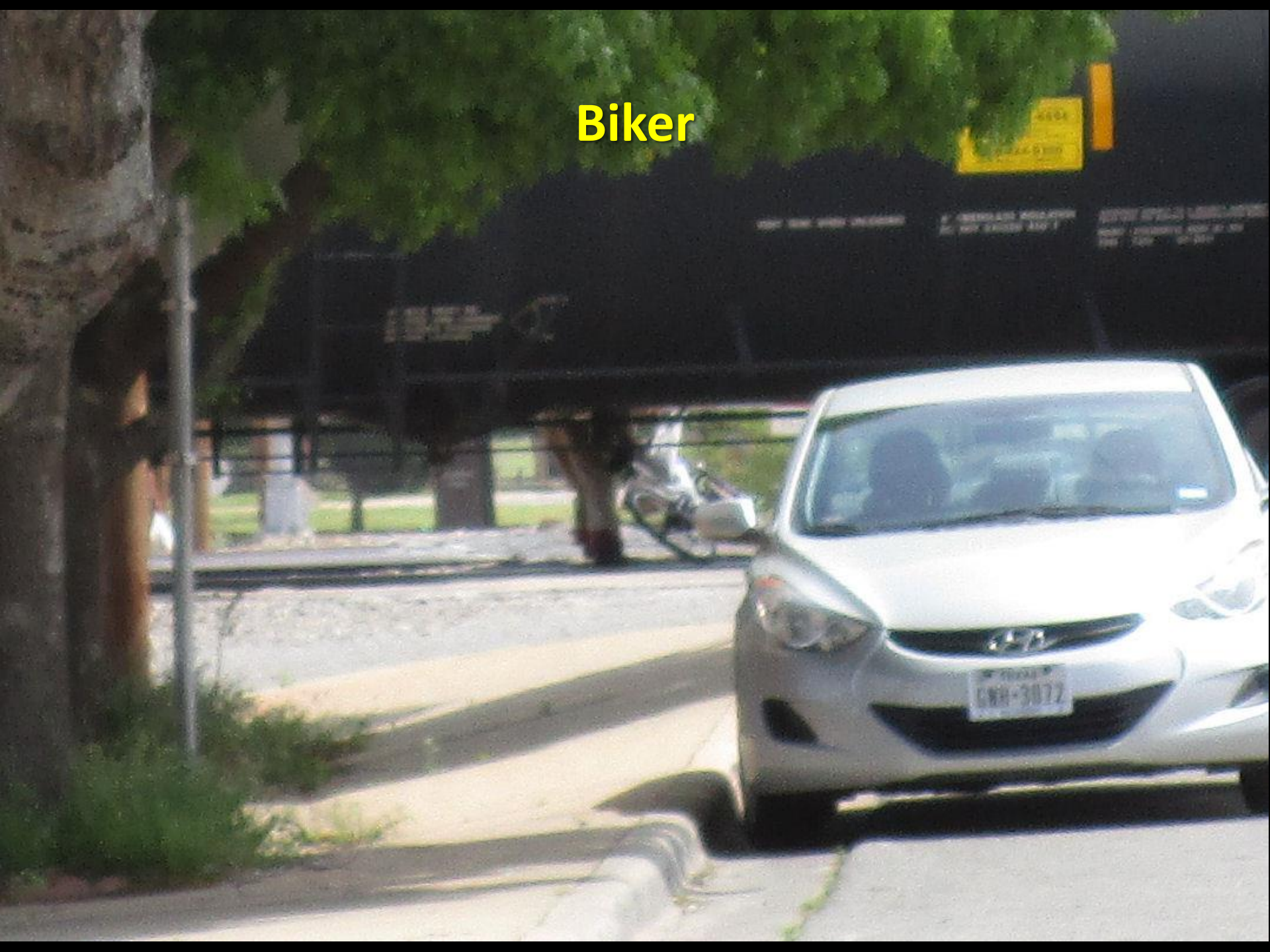


Lady "Jumper"



BN SF
432 301

Biker



6885
214-930

VERY DARK WHEN UNCHARGED

4" FIBERGLASS INSULATION
DO NOT EXCEED 450° F

OFFICE OF PUBLIC UTILITIES
PLANT / PROTECTIVE DIVISION
1001 F.W. WALKER
DALLAS, TX 75201

1/2 MILE WEST ON
11300 AMBASSADOR
LOOK FOR SIGNAGE
AND TURN RIGHT





RAILROAD
CROSSING
9
TRACKS



REPORT PROBLEM
TO THE
FOLLOWING NUMBER
1-800-854-3434

CARBOLINE 893 LINED CAR
APPLIED 9-97
CONSULT OWNER BEFORE
REPAIRING CAR BODY

PAINTED BY FECS-D
S-W MACROPOXY 846 GRAY
APPLIED 08-09



DNV 30-4 H 1-1
7-3 H 11-0
303



WX 450083

MADE IN
USA
SERIAL NO.
1034733-104

TCMX 450083

PLATE
C

LD LMT 316500
LT WT 69500 NEW 9-97

MAXIMUM OPERATING PRESSURE
14.7 PSIG CAR EQUIPPED
WITH SAFETY RELIEF VALVES





2 INCH HT COMP SHOES

WILFELD



AAR 211A100W1

	FORM	QUALIFIED	DATE
TANK QUALIFICATION	TICK	2011	2011
TECHNICAL TEST	TICK	2011	2011
SERVICE EQUIPMENT	TICK	2011	2011
PROXIMATE HELP	TICK	2011	2011
LOADS			
HAZ. INSTRUCTION	TICK	2011	2011
HAZ. SIG. INSTRUCTION	TICK	2011	2011

TX 200753

20 0000 US GAL

2 INCH HF COMP SIDES

2 INCH HF COMP P



AAR 211A00W1

ITEM	QUALIFIED	DATE
SWR QUALIFICATION	TILA	01/11
THICKNESS TEST	TILA	01/11
SERVICE INSPECTION	TILA	01/11
PROBABLEY TEST	TILA	01/11

LANDING

WELD INSPECTION	TILA	01/11
TOP RAIL INSPECTION	TILA	01/11

Sometimes this challenge is doubly dangerous because two trains are in the way.

ILX 200753

LMT 221300 LB 100350 KG
WT 64700 LB 29350 KG

HAN... MUST BE
LOCKED AND CHAINED
IN DISCLOSED POSITION
BEFORE LOADING

613-996-6666
800-424-9300

REPORT PROBLEMS
OR INCIDENTS
1-800-832-5432
1-800-832-5432

VENT TANK WHEN UNLOADING

PROPERTY
TOWNSHIP
WILL BE
PROSECUTED
IF YOU OBTAIN

A woman in a skirt.



613-996-6666
800-424-9300

1-800-832-5452

HAND MUST BE
LOCKED AND CHAINED
IN CLOSED POSITION
BEFORE LOADING



VENT TANK WHEN UNLOADING

INSULATION

OVERSEER SUBJECT TO A
FLASH WITH THE SURFACE TO
UNIT - STRATHMORE BE
XIX 07-20

Another woman



Pedestrians and vehicles often wait several minutes for the train to pass.

TRUCKING TEST	TRUCK	2014	2014
SERVICE EQUIPMENT	TRUCK	2014	2014
PHILADELPHIA	TRUCK	2014	2014
TRUCK	TRUCK	2014	2014
W.R. 2 INSPECTION	TRUCK	2014	2014
STUDY BILL INSPECTION	TRUCK	2014	2014

613-896-8888
 800-224-8380

INTERIOR LINED
 INTERNATIONAL 2900LV
 03-2014

PAINT
 HEMPEL 45883
 11-2017 MRS
 LOT # 387040056

JACK
 HERE
 ↓

1987





NDYX
894120

RAILROAD
CROSSING
9
TRACKS

RAILROAD CROSSING

GROSS WT. 227500
NET WT. 14500

AIR BRAKE

NDYX 894120



CROSSROAD
9
TRACKS

CEFX
4298 2

FRONT 11-16

RAILROAD
CROSSING
9
TRACKS

CEFX
4298 2



La S...

Hello Ag
Furnishings • D
&
Littlest
Skyscraper
OPEN

ACHOGS

LEADS TO
WATERLAKES VINTAGE

NOTE: THIS CAR HAS FOUR COMPARTMENTS.
THIS CAR IS EQUIPPED WITH SIDE OUTLETS.
CAUTION: REMOVE BOTH CAPS BEFORE OPERATING OUTLETS.



NO PARKING
FIRE LANE
↑ ONLY
↓ ONLY

GREEN SIGN

STOP





02/18/2018 7:32AM



02/18/2018 8:23AM



02/18/2018 9:26AM



02/18/2018 11:06AM

CN2-W761



RAILROAD
CROSSING
9
TRACKS

FURX 155713

LD LMT 210900 LB 95850 KG
LT WT 70100 LB 34050 KG

04/25/2018 1:08PM



RAILROAD
CROSSING
9
TRACKS

AIR TIGHTNESS

NO.	DATE	TESTED	BY	RESULT
1	10/15/17	10/15/17	10/15/17	10/15/17
2	10/15/17	10/15/17	10/15/17	10/15/17
3	10/15/17	10/15/17	10/15/17	10/15/17
4	10/15/17	10/15/17	10/15/17	10/15/17
5	10/15/17	10/15/17	10/15/17	10/15/17
6	10/15/17	10/15/17	10/15/17	10/15/17
7	10/15/17	10/15/17	10/15/17	10/15/17
8	10/15/17	10/15/17	10/15/17	10/15/17
9	10/15/17	10/15/17	10/15/17	10/15/17
10	10/15/17	10/15/17	10/15/17	10/15/17

800-424-9300

FURX 155713 PLAN C
LD LMT 210900 LB 95650 KG
LT WT 75100 LB 34050 KG


04/25/2018 5:59PM



Regardless of the weather.



**Unfortunately, there's no shelter
for those waiting to cross.**



Emergency vehicles are delayed in responding to a call.



RAILROAD
CROSSING

AMBULANCE
AMR

TEXAS
FND-6428



Homeless and indigent individuals are prevented from crossing the tracks to receive social and medical services, or perhaps a meal at the Salvation Army.







Longtime Eastside residents vividly recall living all their lives with 7th St as a perpetual safety and access reality.





9th STREET
STATOS TOOLS
MISC. x 10 4
761 7308

THE NATIONAL ARMY

JFG-6010

The only safe alternative route nearby is the Ohio and Front St underpass.



It is several blocks away...

9 FT 6 IN.



...and does not have sidewalk accessibility.





"This street class... circulates traffic in a neighborhood and moves it into a high street class."



The city supports
Downtown Proud
and Downtown
Revitalization.

Indiana
Ave.
Rendering
Details subject to
change with design
development



Wichita Falls City community goals:

"Promote inclusivity and diversity"

**"Increase prosperity for all
Wichita Falls"**



WeCAN with your help, is working to get the city to take forceful measures to facilitate a change in the 7th Street crossing.



MGE Constructors

7th St

LaSalle Crossing

200.00 ft

100.00 ft

273.91 ft

This we believe, will begin to address the segregation and isolation still in existence today.

A small step but genuine progress toward making all of Wichita Falls an inclusive community promoting economic growth for all.



Petition for Action Regarding the Seventh Street RR Crossing



Petition Summary	Railroad tracks bordering downtown are a barrier preventing adequate passage and creating a safety hazard for residents.
Action Petitioned For	Therefore, as concerned citizens, we the undersigned, strongly urge our leaders to take action regarding railroad track blockages at the Seventh St. crossing and the severe road and sidewalk conditions hindering access to and from resources on both sides.

	Printed Name	Signature	Address/ZIP	Phone	Email	Date
1						
2						
3						
4						
5						
6						
7						
8						
9						
10						
11						
12						
13						
14						

Thank
you





TOGETHER
WeCAN

WICHITA COUNTY
ACTION NETWORK